

The background of the page is decorated with several stylized, black-and-white line drawings of mitochondria. These organelles are depicted with their characteristic bean-like shape and internal folds (cristae). Some are oriented horizontally, while others are tilted. The drawings are simple and clean, suitable for an educational or medical context. The text "countdown for a cure" is centered in the upper half of the page. The word "countdown" is in a dark grey sans-serif font, and "for a cure" is in a lighter grey sans-serif font, with the word "cure" highlighted in orange. To the right of the text is a vertical line with two semi-circular shapes, one orange and one grey, positioned on either side of the line.

countdown
for a cure

Your Re-Education On Mitochondria:

**A Simple Guide To Understanding
the Engine Behind Your Health**

Mitochondria: More Than Just Powerhouses of the Cell

You might recall from school that **mitochondria are the cell's "powerhouses,"** generating over 90% of the energy our bodies need. **But they do far more than produce ATP.**

Mitochondria act as dynamic control hubs (Fig. 1): they sense and respond to stress, regulate metabolism, and even influence which genes are switched on or off (epigenetics). Their reach extends well beyond energy production, shaping nearly every aspect of human biology¹⁻³.

When mitochondria falter, the impact is profound - accelerating aging, impairing organ systems, and contributing to a wide range of diseases, including Alzheimer's, heart failure, diabetes, cancer, and more³⁻⁹.

Mitochondria don't just sustain life—they help shape its quality and duration.

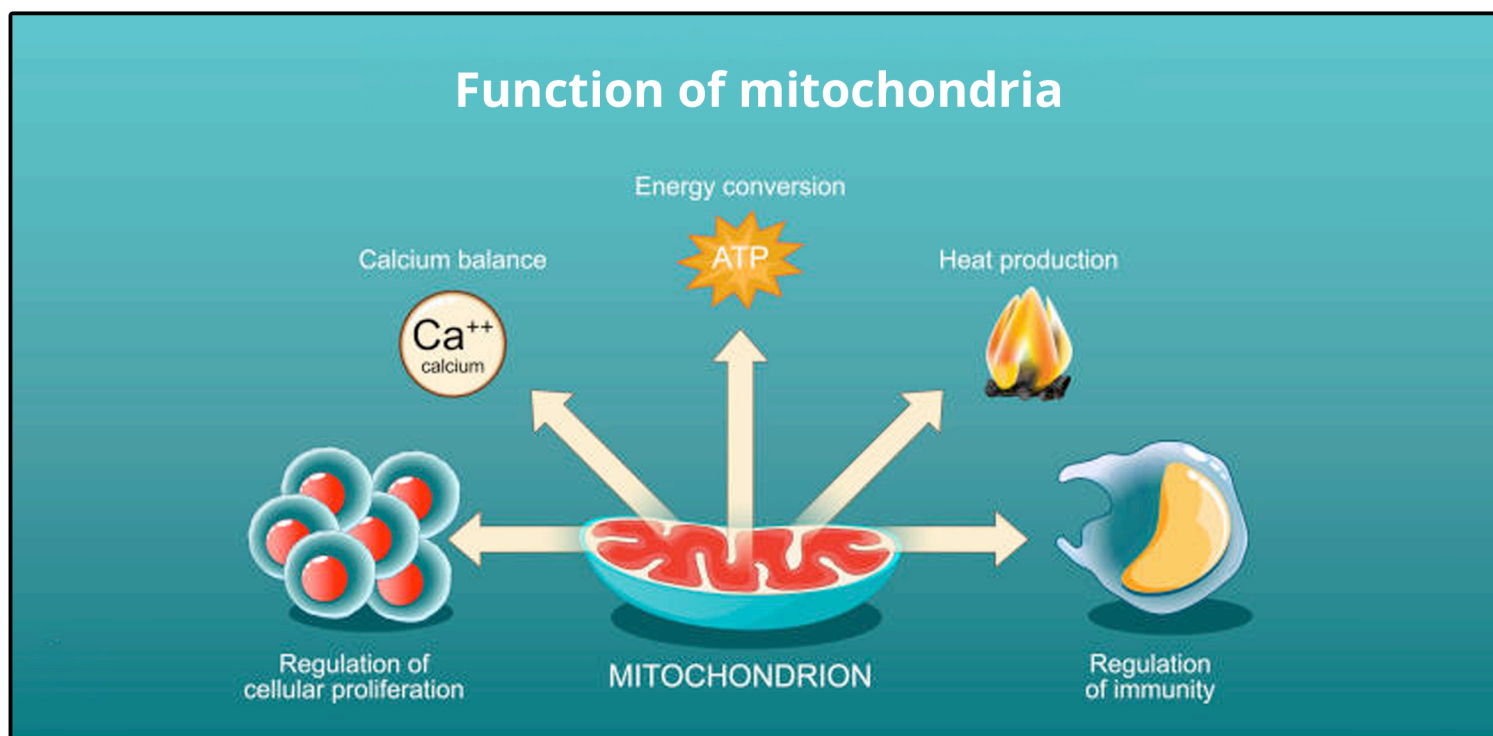


Figure 1. Key functions of mitochondria in cellular health and systemic regulation. Mitochondria are central to energy conversion (ATP production), heat generation, calcium homeostasis, and the regulation of both cellular proliferation and immunity.

What Is Mitochondrial Dysfunction?

Mitochondrial dysfunction occurs when mitochondria are damaged or stop working properly, and its effects go far beyond an energy shortfall. In most instances, mitochondrial dysfunction also disrupts the interconnected signaling pathways. When this happens, everything from your brain to your muscles to your immune system starts to suffer³⁻⁹.

This can be due to:



Genetics



Aging



Environmental
toxins



Medication
use



Infections



Poor
diet



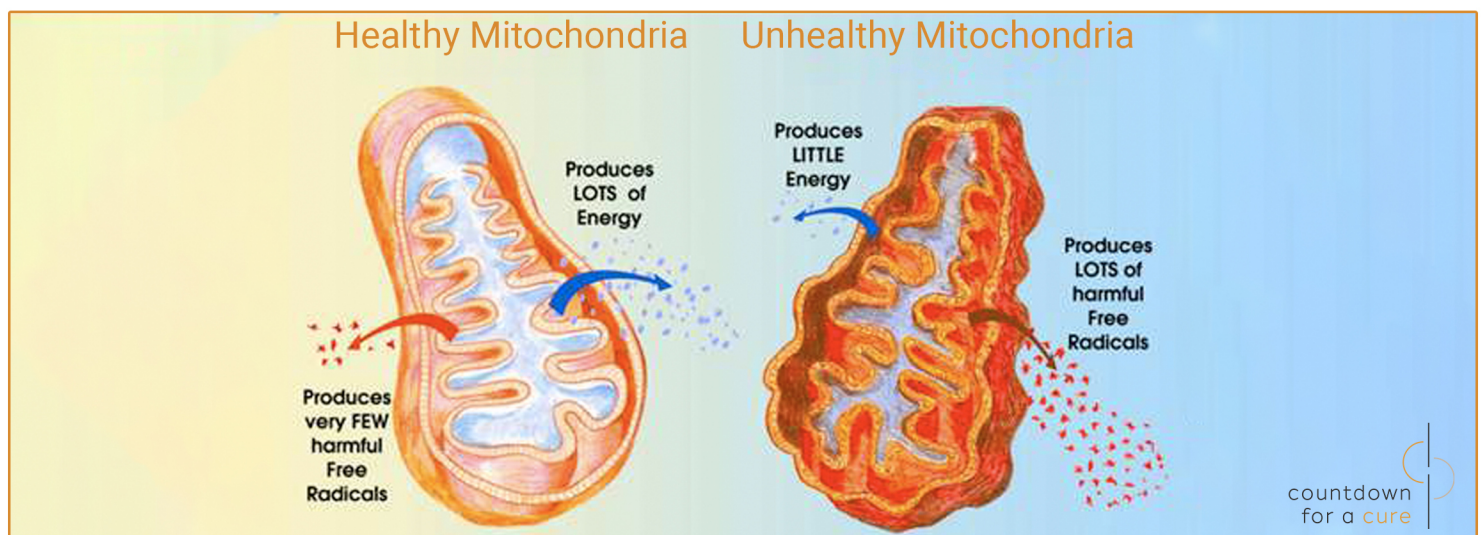
Chronic
stress

And because mitochondria are critical for energy and communication across all systems of the body, their dysfunction can cause a ripple effect of breakdowns (**Fig. 2**).

When this happens, people often feel exhausted no matter how much they rest, struggle to concentrate or think clearly (brain fog), and experience persistent pain, weakness, or mood changes—even before a clear diagnosis is made.

Why Haven't You Heard More About This?

Most physicians receive minimal training in mitochondrial medicine¹¹⁻¹³. Medical Board exams rarely cover how central these organelles are to human health. Mitochondrial dysfunction can manifest in diverse ways, affecting any organ at any age, often masking itself behind seemingly unrelated symptoms. Standard tests rarely detect it, leading to frequent misdiagnosis or it being missed entirely. This is why mitochondrial dysfunction is often called the "hidden root cause" of disease.



How Does It Show Up in Your Health?

Mitochondrial dysfunction isn't limited to rare genetic diseases. Although it is synonymous with rare genetic or primary mitochondrial diseases, mitochondrial dysfunction also plays a significant role in many common and complex health problems people face today (**Fig. 2**)³⁻¹⁰.

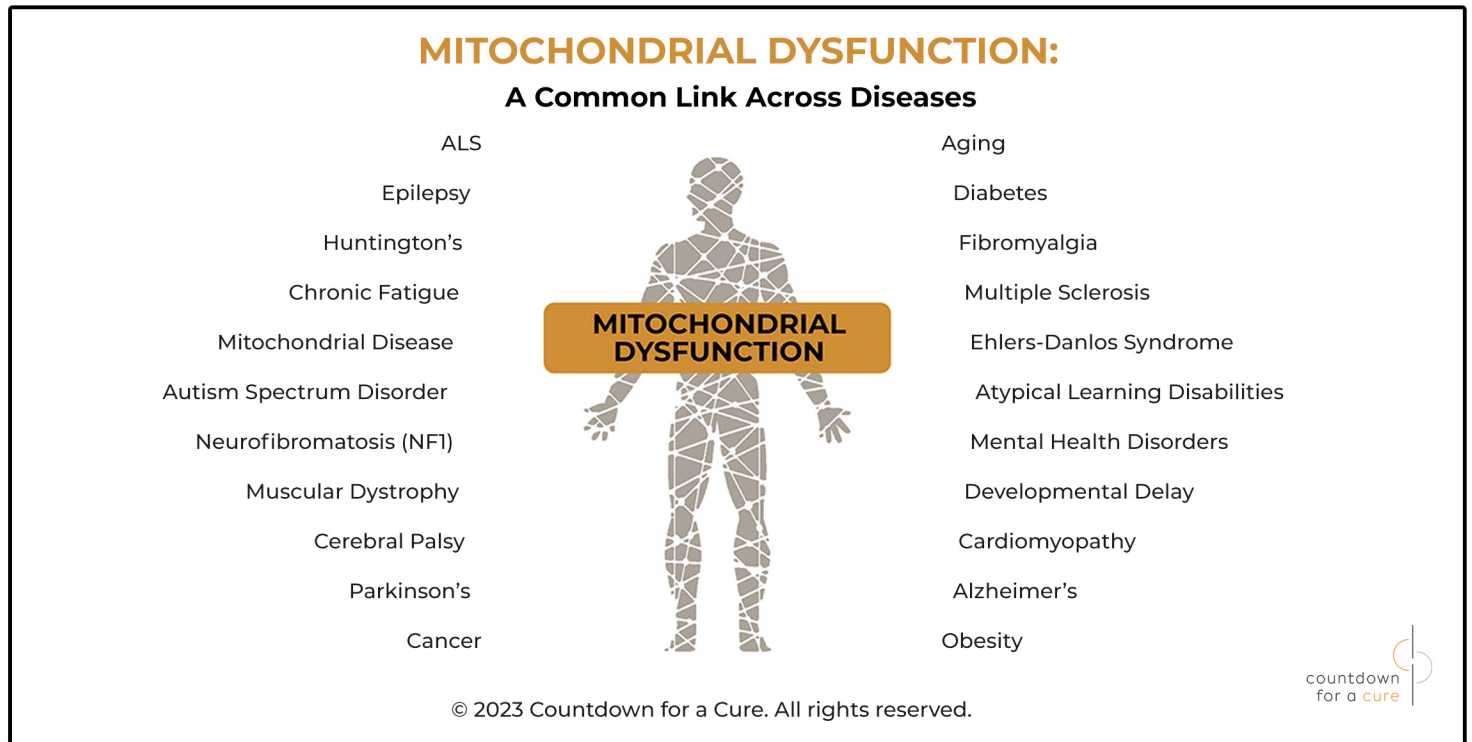


Figure 2. Mitochondrial dysfunction is a common underlying factor in diverse diseases. The broad range of conditions linked to impaired mitochondrial function including neurological disorders (e.g., epilepsy, Parkinson's, Alzheimer's), metabolic diseases (e.g., diabetes, obesity), developmental and genetic syndromes, mental health disorders, chronic fatigue, aging, and various degenerative diseases. Understanding mitochondria's central role offers new pathways for prevention, treatment, and whole-body health.

Can Anything Be Done?

Yes! **Mitochondrial Health can be supported and protected.** Many people are already finding real benefits through:

- Targeted nutrition and supplements
- Intermittent fasting
- Lifestyle changes for stress reduction and quality sleep
- Mitochondria-boosting therapies like cold exposure, infrared sauna, red-light therapy, breath work, and movement

Groundbreaking new therapies and research-backed tools to enhance mitochondrial function are in development. However, we need **more awareness and funds** to bring these solutions to everyone in our community and beyond who needs them.

Why This Matters for the Future of Medicine?

Addressing mitochondrial dysfunction goes beyond managing symptoms - it targets problems at their roots. This is why mitochondrial research is paving the way for:

- Earlier disease detection
- Better treatments
- Slower aging
- Improved brain, heart, and immune health
- Hope for individuals with conditions that currently have no answers—yet



Mitochondria = Energy = Life

At **Countdown For A Cure**, we believe that advancing mitochondrial medicine is the key to unlocking better health for everyone, not only those with rare diseases, but for the millions living with fatigue, inflammation, and chronic illness in our community and also around the world.

We're funding cutting-edge research, raising awareness locally and globally, and pushing the science forward, so people can stop surviving and start thriving. When your cells have energy, everything changes. Because... **Energy is everything.**

We shouldn't be "fixing" disease; we should be funding the future of health and healing.

Together, we're building generational health, creating a legacy of vitality, resilience, and possibility for today and for generations to come.

Learn More and Support our Mission at...

www.countdownforcure.org

Address: 200 Sandy Springs Pl NE, Atlanta, GA 30328

Email: mitzi@countdownforcure.org

Phone: (917) 715-2381

Social: @countdownforcure

Countdown For A Cure accelerates groundbreaking mitochondrial research to develop next-generation solutions for preventing, diagnosing, treating, and ultimately curing diseases rooted in cellular energy dysfunction. Mitochondrial dysfunction affects nearly every area of medicine, including the brain, heart, muscles, and metabolism, yet remains one of the most overlooked drivers of disease. By advancing mitochondrial science and medicine, bridging clinical care, and raising global awareness, we aim to shift the medical paradigm and transform how the world understands and addresses disease.



References

1. J.B. Spinelli, et al., The multifaceted contributions of mitochondria to cellular metabolism. *Nat Cell Biol* 20 (2018) 745-754. PMC6541229.
2. J.R. Friedman, et al., Mitochondrial form and function. *Nature* 505 (2014) 335-343. PMC4075653.
3. M.P. Murphy, et al., Mitochondria as a therapeutic target for common pathologies. *Nat Rev Drug Discov* 17 (2018) 865-886, 30393373
4. M. Redza-Dutordoir, et al., Activation of apoptosis signalling pathways by reactive oxygen species. *Biochim Biophys Acta* 1863 (2016) 2977-2992, 27646922
5. C. Lopez-Otin, et al., The hallmarks of aging. *Cell* 153 (2013) 1194-1217. PMC3836174.
6. A. Diaz-Vegas, et al., Is Mitochondrial Dysfunction a Common Root of Noncommunicable Chronic Diseases? *Endocr Rev* 41 (2020). PMC7255501.
7. J. Kang, et al., Mitochondria: redox metabolism and dysfunction. *Biochem Res Int* 2012 (2012) 896751. PMC3347708.
8. L. Modesti, et al., Mitochondrial Ca(2+) Signaling in Health, Disease and Therapy. *Cells* 10 (2021). PMC8230075.
9. Z. Geto, et al., Mitochondrial Dynamic Dysfunction as a Main Triggering Factor for Inflammation Associated Chronic Non-Communicable Diseases. *J Inflamm Res* 13 (2020) 97-107. PMC7034420.
10. M.M. Klemmensen, et al., Mitochondrial dysfunction in neurodegenerative disorders. *Neurotherapeutics* 21 (2024) e00292. PMC10903104.
11. M. Moore, et al., Navigating Life With Primary Mitochondrial Myopathies: The Importance of the Patient Voice and Implications for Clinical Practice. *J Prim Care Community Health* 14 (2023) 21501319231193875. PMC10467167.
12. M. Mancuso, et al., Current management of primary mitochondrial disorders in EU countries: the European Reference Networks survey. *J Neurol* 271 (2024) 835-840. PMC10828000.
13. J.L.P. Thompson, et al., The evolution of the mitochondrial disease diagnostic odyssey. *Orphanet J Rare Dis* 18 (2023) 157. PMC10288668.

Contributors

Mitzi Solomon, Colwyn Headley PhD, Vivian Martin, Arturo Rocha.